



## Data Sheet **RESI**

# Empower Your Network Through Data

## At a Glance

With over three decades as a technology partner to leading Service Providers, RESI excels in **tailored services** and continuous innovation. Specialising in **4G and 5G network management**, our company leverages robust engineering expertise and ongoing R&D investments. We deliver **cutting-edge Service Assurance solutions** with proprietary Deep Packet Inspection technology, Quality Assurance for contact centers, and Digital Transformation for both private and public enterprises, ensuring a superior level of user experience nationally and internationally.

## About

- Incorporated in 1987
- HQ in Italy
- In-depth telecoms engineering expertise of network signalling.
- +160 Highly qualified engineers
- Innovative Small Medium Enterprise

## References

TIM, WIND, RFI, Ericsson, Open Fiber, Accenture, Leonardo

## Gemini-NET™

- Comprehensive Monitoring, Assurance & Analytics.
- Service Assurance on any Mobile & Fixed Network.
- Dedicated IoT Monitoring, Analytics & Visibility.
- Advanced DPI & IP Classification Technology. Troubleshooting & Root Cause Analysis.

Intelligent and tailored platform for proactively managing the performance of complex networks in order to empower service providers with end-to-end visibility and assure higher quality of service and experience.

## Tailored Solutions

Able to provide tailored solutions including analysis of customer requirements, recommending solutions, developing and delivering solution and supporting it.

## Network Data Management

Data insights, analytics, management and forensic root cause analysis.

## Dashboard

Single Pain of Glass that presents data from multiple sources in a useable display to see the big picture allowing the user to drill down to see more detail to help identify issues to achieve a quick resolution time.

## Single Platform

Supports multiple stake-holders and use cases. There are multiple ways network data can be used for network monitoring and assurance across the organisation.

## Get In Touch:



Phone: +39 06927101  
Email: [info@resi.it](mailto:info@resi.it)  
Website: [www.resi-group.com](http://www.resi-group.com)  
LinkedIn: [@resispa](https://www.linkedin.com/company/resispa)

## Know your customer

- Know the number of domestic users that are outside of your country and where they are.
- Know how many foreign inbound users there are today in your country.
- Produce automatic institutional reports.

## Key benefits



Roaming revenue protection



Better QoE for inbound and outbound roamers



Faster resolution thanks to real time analytics



Complete visibility of all roamers to provide business critical KPIs

## Roaming - case studies

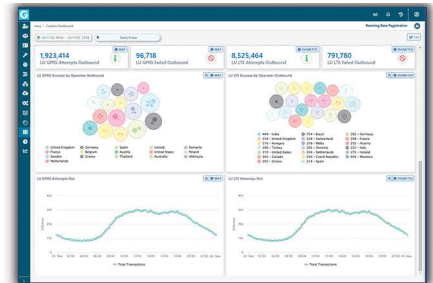
### #1 Outbound - Detecting Traffic Steering



Poor visibility of roaming traffic and scarce control over billing process



GEMINI-NET software suite provides accurate insights into roaming customers traffic (signaling & data)



- Control on roaming users steering.
- Plenty of evidence to check billing
- Customers' quality of service ensured nationally & internationally

### #2 Inbound - Identifying Illegal Roaming Users



SIM used for fraudulent purposes



- Continuous monitoring of signaling traffic.
- Quick identification of users generating excessive amount of voice/data traffic.



- Full network control.
- Traffic stop fraudulent activity.
- Cost reduction.

